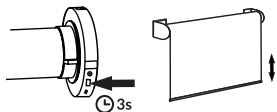


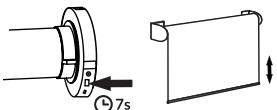
Delete all remote controls

Attention: this procedure does not delete upper and lower limits or the favorite positions 1 and 2.

1. Hold the **HEAD** button for 3 seconds, until the motor moves up and down.



2. Hold the **HEAD** button for 7 seconds, until the motor moves up and down.



Remote control specifications

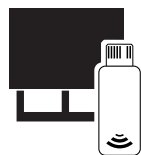
Transmission power: 10dBm
ASK 433.92MHz wireless transmission
Outdoor transmission distance: 200m
Indoor transmission distance: 30m
Working temperature: -20°C ~ +55°C
Battery model: CR2032

Compatible products to automate your home



Smart Controller

Control your blinds from anywhere using your phone or tablet. Voice commands are available if integrated with Amazon Alexa, Google Assistant or Siri Shortcuts.



Blue Link

Local control of your motorized blinds using your phone or tablet. Set schedules to automate your home. No need to connect to your Wi-fi or router.

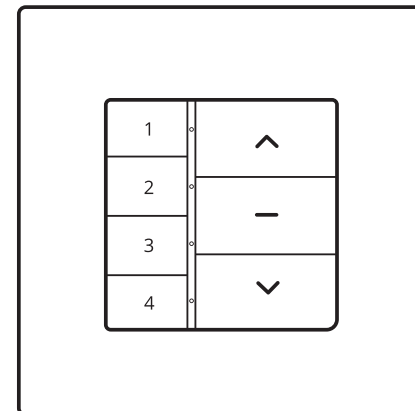
For more information about our **motors, remote controls, compatible products and integrations**, please visit our website. To buy one of these products, please contact your dealer.

neosmartblinds.com

In case of problem or doubt, please contact your dealer.

NEO WALL REMOTE CONTROL

Compatible with all TM-RB,
TM-RE & TM-RT motors
Version 1.0

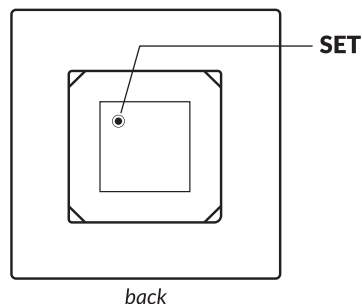
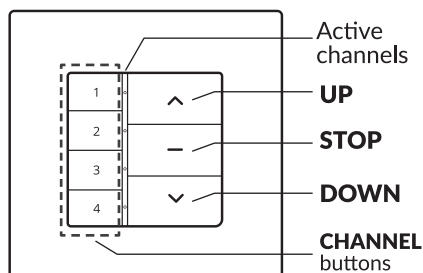


ENGLISH

Models
WS-204-W

powered by Neo Smart Blinds

Getting to know your Neo Wall Remote Control



Basic operation

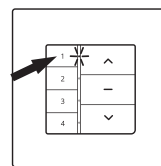
Unless noted, all commands are sent from a wall remote control to a motor, and will only have effect if the **wall remote control's active channel has been paired** with the desired motor.

Command	Description	Key Combination
Go -Up	Move all the way to the upper limit. ¹	Press UP
Go-Down	Move all the way to the lower limit. ¹	Press DOWN
Stop	Stop ongoing motion.	Press STOP
Ativate-Channel ²	Make the chosen channel active.	Press CHANNEL

1 - The motor will stop on button release if the limit is not yet set.
 2 - This command is not sent to the motor, and affects only the wall remote control on which it is executed.

Choosing a channel

In order for a wall remote control to execute commands on a motor, its active channel must be paired with that motor. Use the instructions below to choose a channel, then proceed to the pairing process.

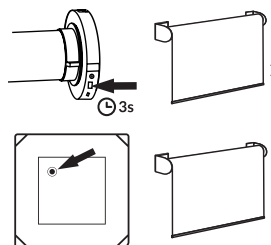


1. Press one of the four **CHANNEL** buttons you want to pair the motor to select it.

Pairing process

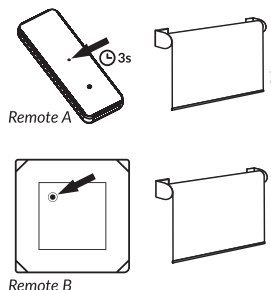
Set remote control channel using the button on the HEAD

1. Hold the **HEAD** button for 3 seconds, until the motor quickly moves up and down.
2. Press the **SET** button on the back of the wall remote control, the motor will move up and down to confirm the operation.



Copy remote control channel

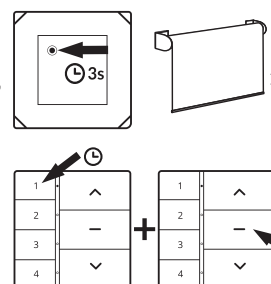
1. Using a previously programmed remote control (A), hold the **SET** button on the back of its case for 3 seconds, until the motor moves up and down.
2. Using a new remote control (B), press **SET** button on the back of its case, the motor will move up and down to confirm the new remote/channel was paired.



Note: this procedure is the same regardless the model of the remote control used on both steps.

Reverse direction

1. Hold the **SET** button on the back of the remote control for 3 seconds. The motor will move up and down to indicate the process has started.
2. Hold the **CHANNEL 1** button then, press the **STOP** button once. The motor will move up and down to confirm the operation.



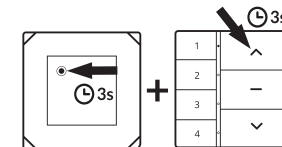
Note: on step 2, use the channel 1 button even if you are reversing the direction for a motor in a different channel.

Setting or adjusting limits

The motor's upper and lower rotational limits are set individually.

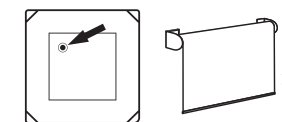
Upper limit

1. Hold the **SET + UP** buttons at the same time for 3 seconds. The motor will move up and down to indicate the process to set up the upper limit has started.



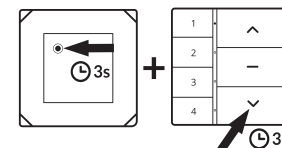
2. Use **UP**, **STOP** and **DOWN** buttons to go to the desired upper position.

3. Press **SET** button on the back of the remote control, the motor will move up and down to confirm that the new upper limit position has been saved.



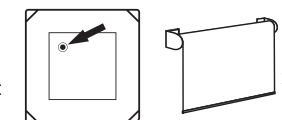
Lower limit

1. Hold the **SET + DOWN** buttons at the same time for 3 seconds. The motor will move up and down to indicate the process to set up the lower limit has started.



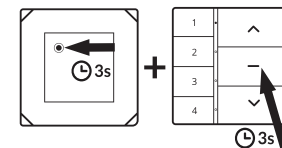
2. Use **UP**, **STOP** and **DOWN** buttons to go to the desired lower position.

3. Press **SET** button on the back of the remote control, the motor will move up and down to confirm that the new lower limit position has been saved.



Delete limits

1. Hold the **SET + STOP** buttons at the same for 3 seconds. The motor will move up and down to indicate the limits have been deleted.



Don't forget to always select the correct channel of the motor you want to adjust.