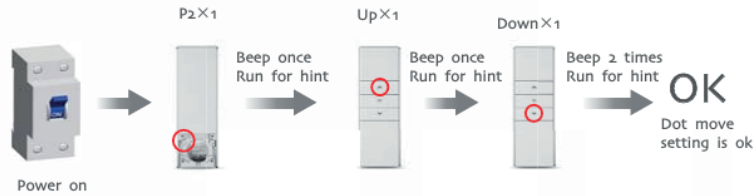




Dot-move setting



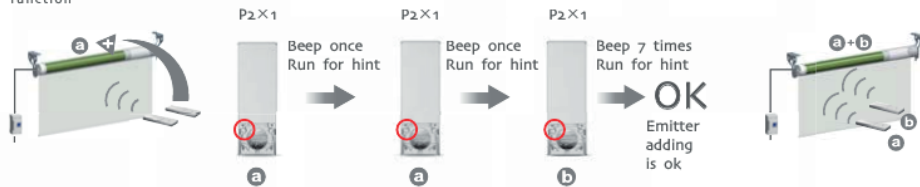
Repeat setting function is cancelled;
In the dot-move mode, it will move
when you loose the button



Add Emitter



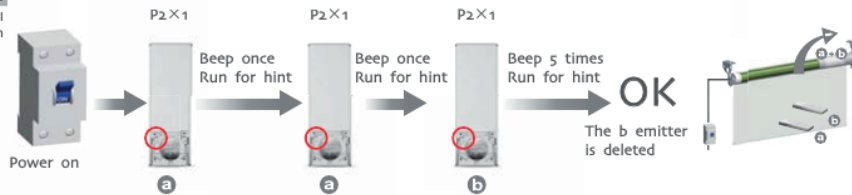
Emitter a is the one already
matched code, while emitter
b has not



Delete one emitter



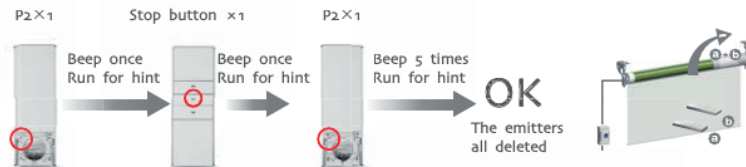
With the same method, you only can
delete the emitter b not the emitter a



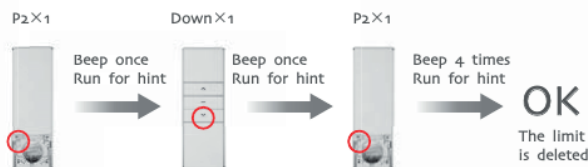
Delete emitter



To clean up the emitter means deleting
all the memory of emitter and limit
switch in the motor receivers



Delete limit



DM25LE

Tubular Motor Specification

Version NO. : A/05



Technical support

If the voltage is less than 10V, the motor will alarm for
10 times to prompt it needs to be charged every time
when the motor is working.

① It's strictly prohibited to beat the motor in transport, storage,
installation and use process. Please minimize the motor vibration.
② It suggests need recharging please charge the battery for 3
hours and make sure it's fully charged before the first use.
Please charge the battery every 6 months



One motor maximum can store 20 channels, over
20 channels, if still need add new emitters, it will
be repeating covered last channel.

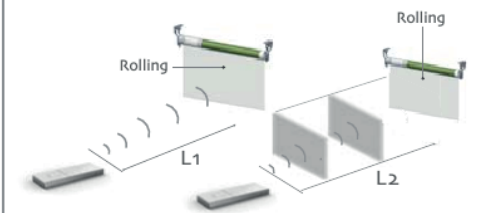
① Please set the limit position before use.
② When in the group control mode, the setting up, deleting
programme, setting limit are unworkable.



Control range



Effective transmitting
distancemay have de-
viation due to actual
environment



	L1 open	L2 partition	Emission frequency
12V	200m	35m	433.92/868 MHz

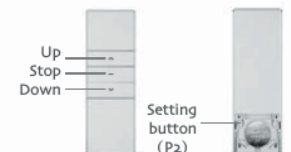
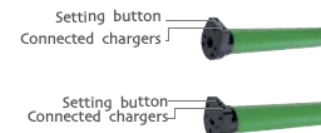


Matchable emitter



Button specification

E: Electronic /
Electronic limit +
Built-in receiver

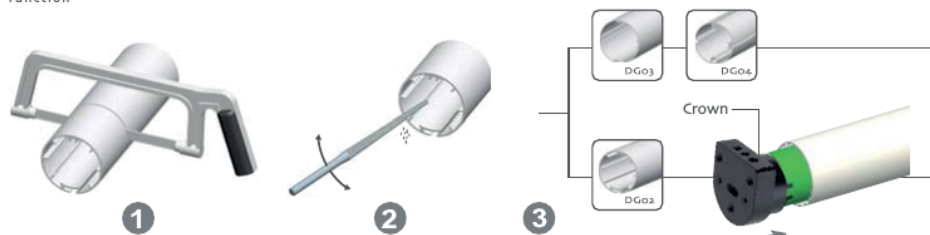


Press the set button on limit head once, the motor run upward, press the set button on limit head
once, the motor will stop, press the set button on limit head again, the motor will run downward. Long
press the set button on limit head for more than 15s, the motor will run for hint, loose it, the motor
will beep 2 times, then motor direction has been changed with the same limits as before; Long
press the set button on limit head for more than 15s, the motor will run for hint, loose it, and beep 3
times, then it will delete every memory and restore the factory settings; Restore factory settings,
the first use of the motor, long press setting button;

A

Additional
function

Crown installation



A

Additional
function

Drive adapter installation



A

Additional
function

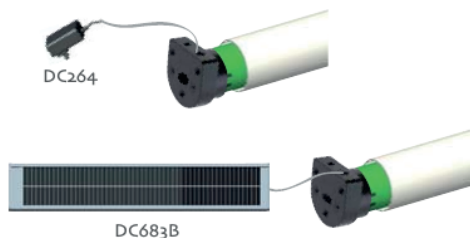
Bracket installation



A

Additional
function

Rechargeable Description



The motor has a built-in battery, using the charger DC264 (1.0Nm and 1.1Nm motor) to recharge. You can also use solar panels DC683B to charge; when the battery is low, insert the charge, charger light shows red light. batteries is full when the red light turns to green.

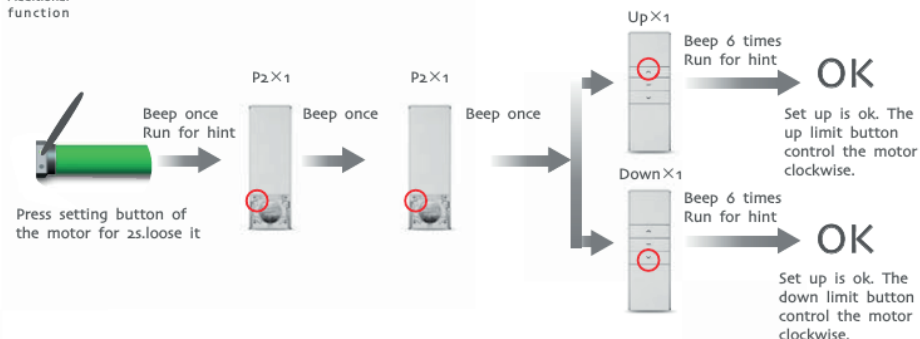
A

Additional
function

Setting up

During the settings, the time between two operation must be shorter than 6s, otherwise it will quit the setting

If the motor already experienced match code, the memory will be cleared if do it again. If you have matched the codes, connect to the power, the motor will work normally, if not, the motor will beep 1 time and turn to remind you entry.



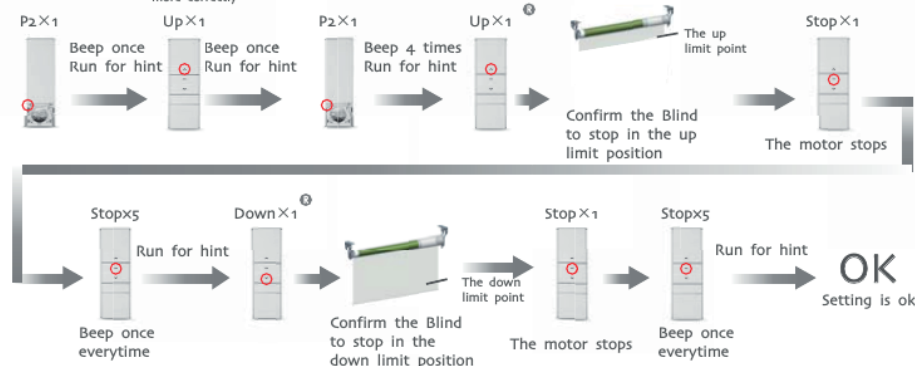
A

Additional
function

Set up / down
limit position

- ① It is invalid when the up limit and down limit are at the same location
- ② After limit setting, with power and memory function;
- ③ into the match-code status 2 minutes later, it will quit out the setting limits status automatically

- Ⓡ !
- ① In the process of adjusting the up / down limit: when the motor moving up or down, press the setting button once, the motor will be under the step-moving status, press the setting button again to quit the step-moving status
 - ② The step-moving status: the motor will run up or down by the way of step-moving so that the limit position can be adjusted more correctly



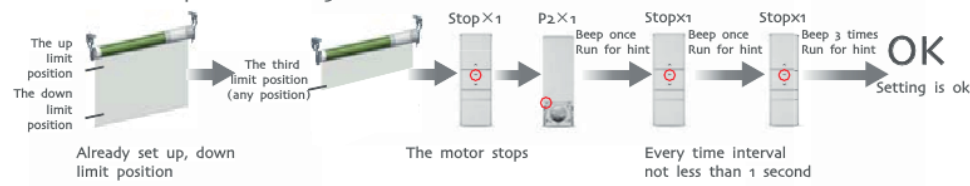
A

Additional
function

The third limit position setting

- ① After the up limit and down limit setting, you can set the third limit point between them as the half open position.② The third limit point will be cancelled as the cancellation of limit and code matching.③ Long press the stop button for 3s, the roller blinds will move to the third limit, if the motor is in the dot-move status, long press the stop button for 3s, the motor will move to the down limit firstly, then move to the third limit.

The third limit position setting



The third limit position cancelled

