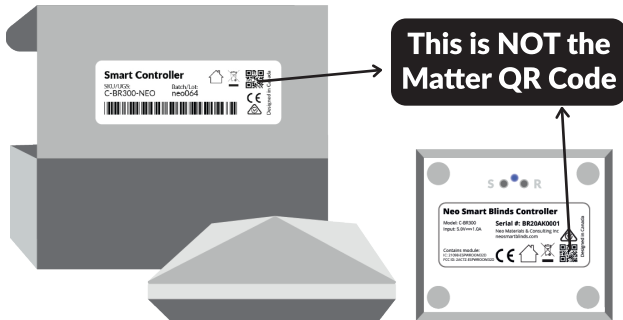


SMART CONTROLLER INTEGRATION VIA MATTER

For Apple Home and Samsung SmartThings platforms

For more details, visit our help center help.neosmartblinds.com



Get Ready for the Next Release!



Scan the QR code to discover how Matter integration will work with the Smart Controller and the Neo Smart Blinds app.

Minimum Requirements

Smart Controller

Neo Smart Blinds app version 5.2.0+. Smart Controller model C-BR300* with serial # starting with "SR".

Note: C-BR300 with serial # starting with "BR", compatibility is under development. WC100 and C-R200 aren't compatible.

Apple Home

A Apple device with iOS 16.1+ or iPadOS 16.1+. At least one of these devices: Apple TV 4K (3rd gen, 128 GB), Apple TV 4K (3rd gen, 64 GB), Apple TV 4K (2nd gen), Apple TV 4K (1st gen), Apple TV HD / Apple TV (4th gen), HomePod (2nd gen), HomePod (1st gen), HomePod mini

Samsung SmartThings

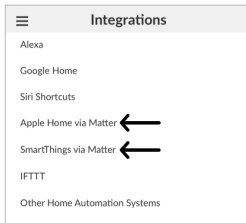
For Android devices, you need the SmartThings App version 1.7.91 or higher. For iOS devices, you will need iOS 16.2 or higher and SmartThings App version 1.6.94 or higher. At least one of these devices: SmartThings Hub v3, SmartThings Hub v2, SmartThings Station

* For the maximum number of blinds that can be integrated via Matter, please refer to the app.

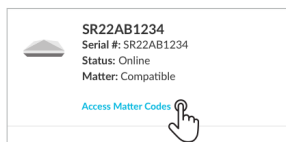
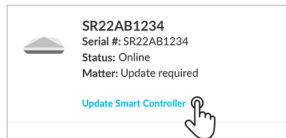
Smart Controller Matter Integration



1. Open the Neo Smart Blinds app.
2. Navigate to **Menu > Integration**.
3. Select one of the Matter option.



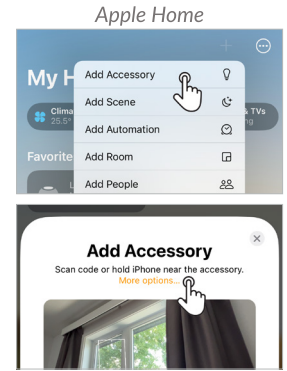
4. If an update is required, follow the app instructions, otherwise, tap **Access Matter Codes**.



5. Connect your phone to the **same Wi-Fi** as the Smart Controller.
6. **Press R** on the Smart Controller and tap **Copy Matter Setup Code**.



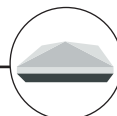
7. In **Apple Home**, tap +, select **Add Accessory**, then **More options**. In **Smartthings**, tap +, select **Add Device**, then **Scan nearby**.



Start here if you don't have an account or paired blinds



1. Download the Neo Smart Blinds app and create your account using the setup code provided in the instructions



2. Follow the in-app steps to add the Smart Controller



3. Pair your motorized blinds by following the Add Blind step-by-step instructions in the app



4. Ensure your Smart Controller is online and that you can control all paired blinds using the app